

DA **Dakota Alert, Inc.**

**WPT-3000
Wireless Probe
Transmitter**

Owner's Manual



Warnings

This device complies with Part 15 of the FCC rules, operation of this device is subject to the following conditions: 1. This device may not cause harmful interference. 2. This device must accept any interference, including interference that may cause undesired operation.

Installation:

The WPT-3000 transmitter is used with the Dakota Alert WR-3000 receiver. The WPT-3000 transmitter uses a magnetic probe and 50 feet of direct burial cable to detect vehicles at the monitored location. When the transmitter detects a vehicle it will send a signal to the receiver which will sound one of 4 different tones (Classical, Westminster Chime, Ding Dong, Whistle) for a few seconds. The transmitter can be used to monitor driveways, drive-up windows, etc.

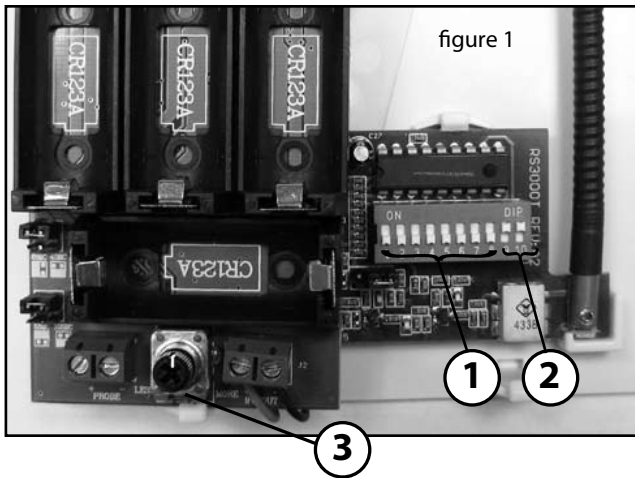
NOTE: Test the WPA-3000 system before burying the probe. Place the probe above ground where it will be installed, then test it by having a car drive by the probe.

Operation: (Always test unit prior to installation)

1. Install 4 CR123 batteries in the transmitter. (figure 1)
2. Set the dip switches 1-8 on the transmitter module to match the receiver.
3. Set dip switches 9 & 10 to control the desired zone, tune and relay output.
4. Bury the probe next to the driveway and bury the wire over to a tree or post.
5. Mount the transmitter box on a tree or post about 4 to 5 feet off the ground.

2.

For maximum range between the transmitter and receiver, the transmitter should be mounted on a wooden post or tree (steel posts may cause interference with the radio signal). Although the maximum range is about 600 feet, things such as hills, trees, metal siding and stucco can all reduce the range.



Coding the transmitter:

Note: The transmitters and receivers are preset at the factory. **DO NOT** change settings, unless changing the tune or experiencing false signals.

1. Locate the dip switches in the WPT-3000 transmitter.

2. The first 8 dip switches are for the frequency setting (256 combinations) (figure 1-1). Set the first 8 switches to match the 8 switches in the receiver.

3. Switches 9 & 10 are for the zone/channel setting on the transmitter (Figure 1-2). The four zones are shown in the table at right.

Switch 9	Switch 10	Channel	12-volt DC output	Tune
On	On	1	Yes	Classical
Off	On	2	No	Westminster
On	Off	3	No	Ding Dong
Off	Off	4	No	Whistle

Mounting the transmitter:

1. The probe will detect vehicles up to about 10 feet away. Lay the probe beside the driveway, then test the unit by having a car drive by. Once the unit is tested, the probe can be buried. The probe should be buried to a depth of 12 inches, laying parallel to the drive. If your driveway is one car wide, bury the probe right next to the drive (figure 2). If your driveway is two or more cars wide, bury the probe in the middle of the drive.

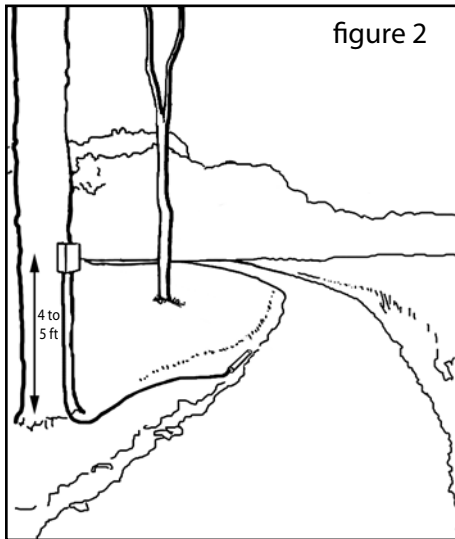
2. If the probe and wire will be in a high traffic area, it is best to bury both in conduit. The wire should be at least 3 inches below the surface to keep it from being damaged by garden equipment.

3. In order to protect the wire, it would also be best to have it in conduit where it is exposed above ground below the transmitter box.

4. Mount the transmitter box on a wooden post or a tree.

5. For best result the transmitter should be at least 4 to 5 feet off the ground.

4.



Test probe by placing in the area to be monitored, and having a car pass by. Do this before burying the probe.

LOW BATTERY ALERT: If the receiver sounds a second alert 30 seconds after the first alert, provided nothing trips the transmitter again, the batteries in the transmitter should be changed.

Coding the receiver:

1. Open the receiver case by inserting a small screw driver into one of the pry notches on the side of the case. (refer to receiver manual)
2. Gently lift off the front cover.
3. Locate the 8 dip switches on the receiver and make sure they are set identically to the first 8 dip switches on the transmitter. Note: If more than one transmitter is used with the receiver, the first 8 dip switches of all transmitters must match the 8 dip switches of the receiver.

NOTE: Whenever a change is made to the time jumper or the dip switches, the receiver must be turned "OFF" and then back "ON" to operate properly.

Troubleshooting the WPT-3000

Although the WPT-3000 should be very reliable, there are occasions when you might have false alarms or a failure to alert. If you are getting false alarms, please try this:

- Make sure that the probe is at least 50 feet from any main roads.
- Turn the sensitivity (figure 1-3) down (counter-clockwise).
- Check the wire for damage to the insulation.

If the transmitter is not detecting, try one of these:

- Change the batteries in the transmitter.
- Make sure the transmitter and receiver are coded alike.
- Turn the sensitivity (figure 1-3) up (clockwise).
- Move the transmitter closer to the receiver.
- Keep the transmitter away from large metal objects that may interfere with the radio signal.

Frequency: 433.92 MHz

Operating voltage: 12VDC

TECHNICAL SUPPORT

If you encounter any difficulty in the operation of this product after reading the manual, please contact us. You can reach us by phone at 605-356-2772 from 8:30 AM to 5:00 PM Monday through Friday (Central Standard Time). We will be happy to answer your questions and help you in any way we can.

WARRANTY

Dakota Alert warrants this product to be free of defects in material and workmanship for a period of one year from the date of purchase. This warranty does not cover damage resulting from accident, abuse, act of God or improper operation.

If this product does become defective, simply return it to Dakota Alert. Please include a note describing the troubles along with your name and return address as well as the original sales receipt. If the product is covered under warranty it will be repaired or replaced at no charge. If it is not covered by warranty, you will be notified of any charges before work is done.

Dakota Alert, Inc.

32556 E. Main Street

P0 Box 130

Elk Point, SD 57025

Phone: (605) 356-2772

Fax: (605) 356-3662

Web: www.dakotaalert.com